



WELCOME TO

**LINIVA CONSULTANTS**

**(CIVIL & GEOTECHNICAL PROFESSIONALS)**



Your Professional Partner for  
*Civil, Geotechnical and Structural Engineering*

Call: 9818774413, Email: [anurgoyal@yahoo.com](mailto:anurgoyal@yahoo.com), Website: [www.linivaconsultants.com](http://www.linivaconsultants.com)



**LINIVA CONSULTANTS**  
Civil & Geotechnical Professionals

## INTRODUCTION

LINIVA Consultants, professional in Civil, Geotechnical and Structural Engineering is led by group of pronounced Engineers from Civil/Geotechnical and Structural Engineering Background who have served for several projects within the country as well as overseas projects for different Corporate Groups.

We have successfully served for more than 500 projects across the India and abroad. We offer independent full-services for field, laboratory works and provide solution to complex. Civil-Geotechnical and Structural Engineering problems. Our services also include testing of various construction materials and providing consultancy services in various Civil Engineering activities.

Being a quality centric organization, we are determined to render flawless and accurate services to our valued customer. Rendering maximum satisfaction to clients, through our quality services & timely completion of the projects with full satisfaction, is the prime aim of our company.

On behalf of LINIVA family, we look forward to our business association, and hope to work with you soon. The following is the brief introduction of our key persons

**Mr. Anurag Goyal** is the key person of company holds Master of Engineering and Technology in Geotechnical Engineering from Thapar Institute of Engineering and Technology, Patiala has the experience of more than 20 years (India & Abroad)







**LINIVA CONSULTANTS**  
Civil & Geotechnical Professionals

## INTRODUCTION

**Mr. Himanshu Kotak** is another key person of company holds Master of Engineering in Geotechnical Engineering from IIT Kanpur has the experience of more than 10 years (India & Abroad) in the field of geosynthetics and geotechnics.

**Mr. Jitendra Singh** is the senior Engineering Geologist with more than 15 years of experience in Geological/Geotechnical studies; he is M. Tech in Geology from Vikram University Ujjain MP, India. He is expert in Geological mapping for highway and Railway Tunnels

**Mr. Surya Narayan Konduri** is the senior chartered Civil Engineer with specialization in Geotechnical and Geo-environment engineering from IIT, Delhi and having more than 15 years of experience. His areas of expertise are TBM Tunnels, Metro Tunnels, underground metro stations, deep shafts, pumping station works, storm water management, waste management etc.





**LINIVA CONSULTANTS**  
Civil & Geotechnical Professionals

## OUR ACTIVITIES

Our Specialization is to provide complete solution towards the Complex Geotechnical/structural Engineering problems, which includes soil mechanics, rock mechanics, foundation engineering, Pile Foundation, Soil improvement/stabilization, foundation strengthening, foundation testing, Geoenvironment/Instrumentation, Topographic Land Survey including DGPS, Total Station, Digital Level, Drone Survey etc.

### Our Field Investigation activities include the Following:

- Topographic and Hydrographic Surveys (Including Drone Survey)
- Soil Investigation and Rock Drilling
- Geological appraisal of Sites
- Static and Dynamic Cone Penetration Tests
- Trial pits with undisturbed sampling, bulk sampling
- Field dry density in place by core cutter and Sand Replacement Method
- Static and Cyclic Plate and Pile Load test
- Bridge Load Test as per IRC: SP: 51:2016
- Slab Load Test
- Subsurface exploration by Electrical Resistivity Survey
- Field Permeability & Percolation Test
- CBR Test







**LINIVA CONSULTANTS**  
Civil & Geotechnical Professionals

## OUR ACTIVITIES

### Our Consultancy Services include the Following:

- Geotechnical Assessment and Third Party Report wetting
- Ash pond and landfill site design
- Reservoir analysis and Design
- Sand pad foundation for tanks (Analysis and Design)
- Liquefaction Analysis
- Hardstand Design (for cranes/Temporary structure erection)
- Slope Stability Analysis (Temporary and Permanent slopes)
- Railway and Highway Embankments design
- Design of various Retaining Structures including RE Walls
- Foundation Failure studies and mitigation foundation Distress
- Ground Improvement Schemes
- Reviewing Instrumentation Data and analysing Reports
- Analysis and Design of Deep excavation Schemes (with various Software's)
- Support during difficult situations of project Execution
- Geo-environment studies
- Dynamic Analysis of soil/Foundations
- Design of gravity/Reinforced Gabion Walls
- Road and Underground Drainage Design

### Our Construction activities include the following:

- Bored and Under-reamed Piles
- Contiguous/Secant Piles
- Pressure Grouting
- Soil nailing for Deep Excavations and ground Stabilization
- Rammed Stone Columns
- Rock anchoring/Rock Bolting





**LINIVA CONSULTANTS**  
Civil & Geotechnical Professionals

## OUR SERVICE SECTOR

Some of our major service sectors are as follows:

### Infrastructure

- Bridge and Highways (Including Hilly roads)
- Railways
- Metro Projects
- Airports
- Ports
- River Training
- Landfill sites
- Ropeways

### Commercial & Residential Projects

- High Rise Buildings
- Factories
- Commercial Establishments

### Industry Projects

- Steel and Thermal Power Projects
- Hydroelectric Power
- Solar Projects
- Refineries & Petrochemicals







**LINIVA CONSULTANTS**  
Civil & Geotechnical Professionals

## OUR QUALITY POLICY

In Liniva family, "QUALITY" is a habit, to actively pursue on a routine basis, not something like a destination but improving on a continuous basis and is an ongoing journey. We make it ensure that whatever design or field activity we do, it meets our client's technical requirements first time and every time.

Our aim is to gain customer confidence by using quality standards in design consultancy, field Investigation and construction activities. The management of Liniva consultants is of the view that a continual improvement of the overall performance is essential for maintaining the desired quality standards and to meet the changing customer requirements. Liniva actively cooperates with all stake holders to achieve common goals by working seamlessly across various functional boundaries.

We represent in various National Forums and active member of various professional societies and published various technical papers. By the way of participating in these forums, we improve our technical skills and get innovative ideas to solve the problems efficiently and in cost effective solution.

Our vision is to become a leading Industry partner for all Civil-foundation and Geo-technical related works by providing reliable and realistic solutions. We as a Liniva family demonstrate openness and respect for varied opinion and believe the success in team work.





**LINIVA CONSULTANTS**  
Civil & Geotechnical Professionals

## LIST OF EQUIPMENTS

- Boring and drilling rigs of various makes
- Heavy Duty Rotary Diamond Core Drill Machine and its accessories
- Light duty calyx drill machine with all accessories
- Dynamic Cone Penetration Test Equipment with all accessories.
- Electrical Resistivity Testing Unit with 90 Volt battery pack
- Plate Load test equipment's with all accessories including girders, dial gauges, datum bars etc. for testing using 30, 45, 60, 75 and 100 cms square and circular plates
- SPT Samplers
- Field Permeability Test with single and double packers, with all accessories, complete (NX & HX).
- Thin Walled Tubes 75 mm and 100 mm dia
- Various laboratory equipment's
- DGPS
- Total Station
- Digital Level
- Auto Level
- Drone and it's accessories (Matrix make with Thermal camera)







**LINIVA CONSULTANTS**  
Civil & Geotechnical Professionals

## MAJOR PROJECTS COMPLETED RECENTLY/ONGOING PROJECTS

- DPR for the Selected Stretches/Corridors of Road Network in the State of Maharashtra, for Upgradation to Two Lane with Paved Shoulder/Four Lane Configuration for the work of Package no.1 Nanded-Osman-Nagar-Kandhar-Jalkot-Udgir-Bider-Gulberga-Vijayapur-Hospet (NH-50)
- Preparation of feasibility study/detailed engineering report for construction of two-lane with paved shoulder newly proposed national highway road (approved "in principle" for declaration as national highways) from junction of NH-48 near Dudu connecting Naraina, Sambhar, Nawan, Narayanpura, Kuchaman city, Basdu, Toshina at Chhati Khatu near NH-458.
- Detailed Project Report for Rehabilitation and Upgradation to 2 lane/2 lane with paved shoulders Configuration and Strengthening of National Highway No.108 from km 0.000 (Dharasu) to km 124.000 (Gangotri) in the state of Uttarakhand (Package No 4) by MORTH.
- Detailed Project Report for Rehabilitation and Upgradation to 2 lane/2 lane with paved shoulders Configuration and Strengthening of National Highway No.58 from km 228.00 (Rishikesh) to km 368.00 (Rudraprayag) in the state of Uttarakhand by MORTH.
- Selected Stretches/Corridors of Road Network (Likely to be declared as National Highway in the State of Maharashtra, for Upgradation to Two Lane with Paved Shoulder/Four Lane for Nagzari-Murtizapur-Karanja-Chakwa-Manglurpir-Washim (Package No. NH/MSRDC/9).
- Up gradation of Nanded-Hingoli-Washim-Akola Section of NH-161 in state of Maharashtra to Two lane/Four Lane with Paved Shoulder configuration.



**LINIVA CONSULTANTS**  
Civil & Geotechnical Professionals

## **MAJOR PROJECTS COMPLETED RECENTLY/ONGOING PROJECTS**

- Soil Investigation of Rohtak Meham Railway Line Upper, Haryana.
- SOIL INVESTIGATION WORK FOR 4-LANING OF WARORA-WANI, SECTION OF NH-930, FROM KM 313+850 TO KM 332+160 IN THE STATE OF MAHARASTRA ON EPC MODE.
- Slope stability and consultancy for high level road bridge over river Teesta near Haldibari connecting sub divisional head quarter at Mekhliganj in the district of Coochbehar (West Bengal).
- Ground Improvement for 4 Lane Cable Stayed Road over Bridge in lieu of existing Chandmari Road over Bridge

## **SISTER CONCERNS**

M/s. Megs Geo Engineering  
M/s. Unique Surveyors  
M/s. Marc Surveying Systems  
M/s. C-Phi Consult Pvt. Ltd

## **CLOSURE**

We are enclosing/presenting herewith relevant information about our Services for your kind perusal. We are confident that, upon review of these details, you shall find that we are uniquely qualified to take up works for your projects. We request you to please contact us in case you require further Information. We eagerly await to get connected with you.



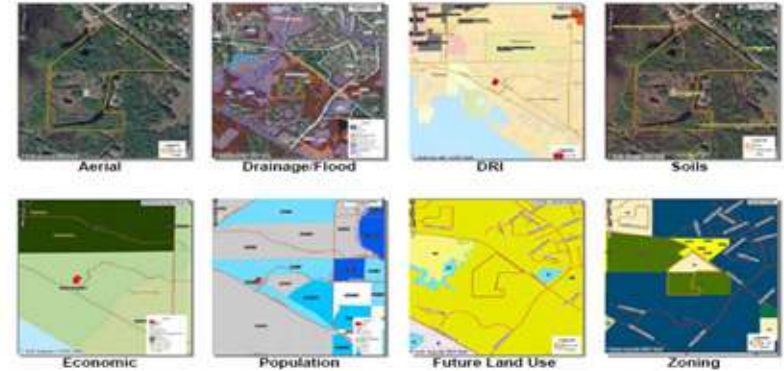


**LINIVA CONSULTANTS**  
Civil & Geotechnical Professionals

## MAJOR SERVICES



LAND SURVEY, GIS & MAPPING SOLUTIONS



TOTAL SURVEY



FIELD CBR USING DCPT METHOD  
IN TRIAL PIT



IN-SITU MOISTURE CONTENT AND ROAD CREST MEASUREMENT  
IN TRIAL PITS





**LINIVA CONSULTANTS**  
Civil & Geotechnical Professionals

## MAJOR SERVICES



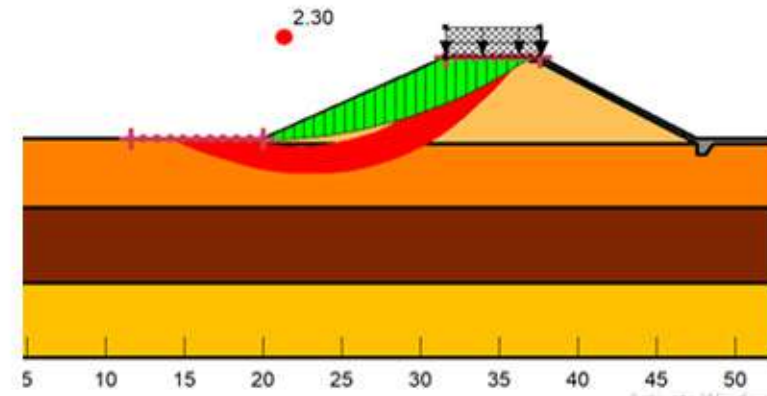
BOREHOLE IN SOIL UNDERWATER  
WITH LIGHT DUTY CALYEX



DRAINAGE PLANNING IN ASH POND  
ALONG HILLS



HDPE LINER IN ASH POND ALONG DYKE  
SLOPES



SLOPE STABILITY ANALYSIS FOR DAMS



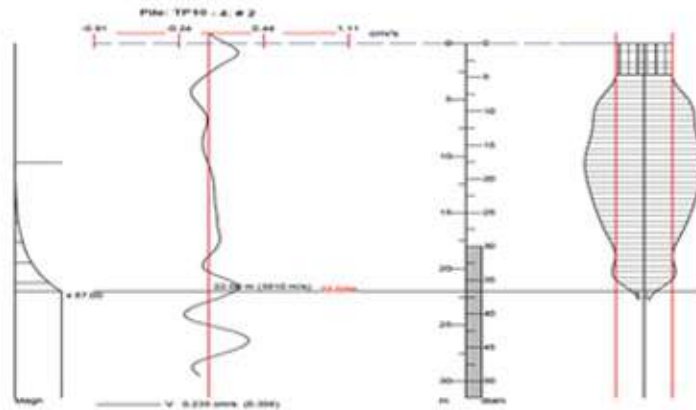


**LINIVA CONSULTANTS**  
Civil & Geotechnical Professionals

## MAJOR SERVICES



TYPICAL LOAD TEST SETUP FOR PILES



TYPICAL PILE INTEGRITY TEST RESULT



**LINIVA CONSULTANTS**  
Civil & Geotechnical Professionals



## **Mr. Anurag Goyal(Director)**

**E-mail: [anurgoyal@yahoo.com](mailto:anurgoyal@yahoo.com),**

**M 9818774413, 9818774413**

Mr. Anurag Goyal is a practicing Geotechnical Professional with over 20 years of experience. He has a vast experience in the field of geotechnics and Pile Foundations. He is working in the field of infrastructure sectors including Highways, Railways, Airport, Port-Marine, Landfill sites, Thermal Power Plants, Residential Projects, Oil and Gas, Industrial Projects etc. He has been consultant to over 100 major projects in the areas of geotechnical and geo environmental engineering as a practicing Engineer. His area of expertise includes:

1. Geotechnical Investigations (Field/Laboratory Testing and report writing) and Topographic survey.
2. Slope stability of Earthen Embankment.
3. Shallow Foundations.
4. Pile and Well Foundations.
5. Landfill Engineering.
6. Ash Pond and Geo environmental Engineering.
7. Ground Improvement Techniques.
8. Liquefaction Analysis.
9. Deep Excavation design including reinforced slopes and RE Walls
10. Dynamic Analysis of Foundations
11. Review of Technical Reports and case studies, vetting of Reports and validating the Geotechnical Recommendations

His professional aim is to excel in civil and geotechnical engineering practice by applying modern engineering concepts to field situations and to bridge the gap between research and practice. He stands committed to good professional practices and ensuring quality work in the field of geotechnics.

Mr. Anurag Goyal obtained his B.Tech (Civil Engineering) and M.Tech (Geotechnical Engineering) from Thapar University, Patiala. He had been awarded with a Roll of Honor certificate for ranking 1st in the University in M. Tech. He is also a PG Diploma holder in TQM & ISO 9000. He is life fellow of various professional forums such as Indian Geotechnical Society (Main body), Institution of Urban Transport, India, Indian Geotechnical Society, Delhi Chapter. He has been actively participating in various activities of the IGS Delhi Chapter over the past ten years.





**LINIVA CONSULTANTS**  
Civil & Geotechnical Professionals



## **Mr. Anurag Goyal(Director)**

**E-mail: anurgoyal@yahoo.com,**

**M 9818774413, 9818774413**

He has also obtained various trainings related to qualities such as Internal Auditing for Laboratory Quality Management System as per ISO/IEC 17025:1999 by Bureau of Indian Standards (BIS), Training in Non-Destructive Testing of Materials, and Internal Auditing for Quality Management System as per ISO 9001-2008 by LRQA.

His detailed description of works carried out is summarized as follow:

- Designing and analysis of Shallow foundations, piles, high embankments, retaining walls and well foundations.
- Designing of Ash Pond
- Involved in co-ordination of various geotechnical-engineering projects, including data collection and analysis, literature reviews, liaison with client, report preparation and project specification preparation.
- As a Geotechnical Engineer, he was responsible for field activities such as drilling through soils and rocks. Identification and classification of soils and rocks.
- Involved in in-situ testing of soil e.g. SPT, dynamic cone penetration, static cone penetration, plate load test, pile load test, pile integrity test, permeability tests, Field CBR test, electrical resistivity test, Pressuremeter test, piezometer installation, pump out test, seismic refraction test, cross hole seismic test, etc.
- Ensuring field and laboratory testing as per norms and monitoring quality control of works and materials, documentation of laboratory test results and quality control activities (as per ISO: 17025:2005).
- Training and familiarizing company personnel on various aspects of ISO 17025: 2005, and ISO 9001-2008, performing internal quality audits, organizing and managing external quality audits.
- Design of High embankments / railway embankments.



**LINIVA CONSULTANTS**  
Civil & Geotechnical Professionals



**Mr. Anurag Goyal(Director)**

**E-mail: anurgoyal@yahoo.com,**

**M 9818774413, 9818774413**

- Review and vetting of Technical Reports.
- Ground improvement with stone columns, PVDs, Soil Nailing / Rock anchoring etc.
- Design of Reinforced soil walls and reinforced soil slopes.
- Having good hands on engineering software's such as Geostudio, Wallap etc.

**TECHNICAL PAPERS PUBLISHED:**

- Paper presented in IGC-2001 on "Risk in Estimation of Ultimate Loads of Ash Fill by Model Tests."
- Paper presented in IGC-2006 on "Dynamic Properties of Alluvial Soils - A Case Study."
- Paper on "Geotechnical Investigation in Boulder / Gravel Deposits – Case Study of the Bein Bridge", communicated to Indian Roads Congress for publication in IRC Journal.
- Paper presented in IGC-2013 on "Geotechnical and Environmental aspects of Ash Pond in Valley Portion Formed by Natural Hills"
- Paper presented in IGC-2014 on "Design Criteria for ash Ponds of Coal Based Thermal Power Plant Projects"
- Paper presented in IGC-2014 on "Geotechnical Aspects of Various Foundation Systems of Coal Based Thermal Power Plant Projects"





**LINIVA CONSULTANTS**  
Civil & Geotechnical Professionals



**Mr. Himanshu Kotak(Sr. Geotechnical Consultant)**

E-mail: [info@linivaconsultants.com](mailto:info@linivaconsultants.com)

M 9818774413, 9818774413

### BRIEF SUMMARY

Experienced Geotechnical Engineer with working experience as a Design Engineer, Senior design Engineer, Assistant Manager - Designs, Manager - Designs, Project Manager and Senior Geotechnical Engineer.

Experience for varieties of types of projects with geotechnical scope including roads, railways, airport, Port-Marine, Landfill, Thermal Power Plant, Residential etc.

Expertise in Geotechnical investigations (Field and Laboratory), Interpretation of geotechnical reports, Ground Improvements techniques like PVDs, Slope stability works, Open foundations, Pile foundations, Earthworks, Reinforced soil walls, Reinforced soil slopes, Gabion walls, Soil and Rock identifications, worked with geosynthetics like geotextiles,

- ▶ Worked with prominent contractors / consultants.
- ▶ Worked as designer, contractors, consultant.
- ▶ Worked within India and Abroad (Oman and UK).
- ▶ Worked in MNCs and Indian Companies.
- ▶ Worked and Lead - Design and Execution Teams.
- ▶ M. Tech in Geotechnical Engineering/ Civil Engineering from IIT Kanpur.
- ▶ More than 10 years of experience (After BE Civil) in geotechnical works.
- ▶ Developed good sets of Technical and Management / soft skills.
- ▶ Excellent Communication skills
- ▶ Worked in Mumbai, Pune, UK, Vadodara, Oman, Kutch etc.



**LINIVA CONSULTANTS**  
Civil & Geotechnical Professionals



**Mr. Himanshu Kotak(Sr. Geotechnical Consultant)**

E-mail: [info@linivaconsultants.com](mailto:info@linivaconsultants.com)

M 9818774413, 9818774413

### KEY ACHIEVEMENTS

- (a) Visited United Kingdom twice in the year 2010 for providing design support and training design team to Maccaferri UK Ltd.
- (b) Design of Sadlers Farm concrete panel system with polymeric strips (Paraweb) – 1st Maccaferri project with concrete panel system in UK.
- (c) Active involvement in Indian projects with complex designs (Soft soil stabilisation using geocell, ground improvement, reinforced soil solutions and Geosynthetic solutions).

### ➤ Strengths

- (a) Excellent communication skill
- (b) Excellent knowledge and experience in spreadsheet calculations.
- (c) Excellent Mathematical and reasoning abilities.
- (d) Highly self-motivated with capabilities to work independently on challenging tasks.
- (e) Very comfortable with engineering softwares.
- (f) Team Leader

### ➤ Education Profile

M. Tech Civil Engineering (Geotechnical Engineering) (CGPA - 7.43/10)–  
(Duration: 2007-2009) from Indian institute of Technology, Kanpur (IIT Kanpur)

BE Civil Engineering (First Class)  
Duration: 2003-2007 from M.S. University Baroda

### ➤ Softwares & Computer Literacy

- (a) Finite element analysis package: ABAQUS, seepage analysis software SEEP/W.
- (b) Slope stability analysis software: SLOPE/W (Geo-studio 2007), Macstars, MSEW, SRWall, Allan Block, Anchor Wall, RESSA, GEO5, MacRes, GawacWin





**LINIVA CONSULTANTS**  
Civil & Geotechnical Professionals



## **Mr. Jitendra Singh(Sr. Geotechnical Consultant)**

**E-mail: [info@linivaconsultants.com](mailto:info@linivaconsultants.com)**

**M 9818774413, 9818774413**

### **PROFESSIONAL SYNOPSIS**

A result oriented professional with 15 years' experience in Geological/Geotechnical Studies, Geotechnical Investigations, 3D Logging, construction material survey, slope protection analysis of hilly terrain area and basement excavation and Geological Mapping for Highway tunnel, Railway Tunnel, Thermal power and Hydropower Projects making of Geological & Geotechnical report.

Excellent communication & interpersonal skills with strong analytical, team building, problem solving and organizational abilities.

### **CORE COMPETENCIES**

Geological Mapping of Dam Axis and Intake area, Power House and Surge Shaft area, HRT.

Suggesting appropriate supports for safe tunneling work which includes Using Steel Ribs or without ribs by applying rock bolting, shotcreting, etc.

Indicating direction of rock bolts, spot bolts, fore poling, etc.

Indicating Probe Hole direction and logging for ascertaining advance Geological information and deducing Tunneling strategy.

Supervision of Drilling work for determining Subsurface Geology and preparation of Geological data sheets of different drill holes.

Technical report writing.

Instrumentation (Multiple Point Borehole Extensometers).

Calculating Rock Mass Rating (RMR) and 'Q' system of rock mass for determining Tunnel Support.

Drilling, Sampling, Core logging and Borelog preparation.

Conducting Geotechnical Field Tests & Conducting In-situ test.



**LINIVA CONSULTANTS**  
Civil & Geotechnical Professionals



**Mr. Jitendra Singh(Sr. Geotechnical Consultant)**

E-mail: [info@linivaconsultants.com](mailto:info@linivaconsultants.com)

M 9818774413, 9818774413

#### **EDUCATIONAL QUALIFICATION**

- |      |  |
|------|--|
| 2005 | (MSc.Tech.) Master of Science in Applied Geology with 1st Division (72%) from Vikram University Ujjain MP.India        |
| 2003 | (MSc.) Master of Science in Applied Geology with 2nd Division (55%) from Dr. B.R Ambedkar University, Agra, U.P India. |





**LINIVA CONSULTANTS**  
Civil & Geotechnical Professionals



**Mr. SURYA NARAYANA KONDURI (Sr. Geotechnical Consultant)**

**E-mail: [info@linivaconsultants.com](mailto:info@linivaconsultants.com)**

**M 9818774413, 9818774413**

### **KEY QUALIFICATION**

Chartered Civil Engineer offering 15 years of successful career with diverse roles distinguished by commended performance in Geotechnical Designs, Tunnel Designs & Construction, Design Coordination, Construction Supervision and Project Management

Knowledgeable in International Codes of practice such as BS, EUROCODES, ASTM, CIRIA, IBC and API; skilled in ISO 9001, ISO 14001, ISO 45001 Standards

Expertise in design and construction of NATM and TBM tunnels, Underground Metro Stations, Deep Shafts, Pumping Station Works, Soil investigation works (Offshore and Onshore), Geotechnical designs, Engineering reporting, design of foundation systems, design of temporary & permanent earth retaining systems, slope protection works, ground improvement works, geotechnical instrumentation, design & execution of earthen dam design of ash ponds, storm water management, design of landfills, waste management, quality assurance, geophysical characterization of sites (Offshore & Onshore), liquefaction studies, soil-structure interaction problems and site specific seismic studies

Executed projects in design and project management for underground metro stations and tunnelling, Pumping station and Outfall Tunnel Projects, high rise buildings, bridges, highways & expressways, power plant facilities, storm water infrastructure, ash ponds, earthen dams, oil and gas, pipeline network and offshore projects in India, Qatar, Australia, Indonesia, Vietnam and Jordan

Proficient in design drawings and specifications for a wide range of construction projects with an emphasis on utilization of earth materials

Passion for ensuring that construction efforts are as environmentally friendly as possible

### **TECHNICAL SKILLS**

PLAXIS 2D  
LPILE  
MS Project

GeoStudio  
WinSASW  
Advance Level MS Office

Piled Wall Suite  
GIS  
AutoCAD

WALLAP  
STAAD



**LINIVA CONSULTANTS**  
Civil & Geotechnical Professionals



**Mr. SOUMITRA HALDAR(Sr. Geotechnical Consultant)**

**E-mail: [info@linivaconsultants.com](mailto:info@linivaconsultants.com)**

**M 9818774413, 9818774413**

### **KEY QUALIFICATION**

Mr. Soumitra Halдар is a practicing Geotechnical & Structural Engineer with over 15 years of experience. He has a vast experience in the field of Geotechnical and Structural designing. He is working in the field of infrastructure sectors including, Thermal Power Plants, Residential & Commercial Projects. He has been involved in over 10 Major Thermal Power Projects as a practicing Engineer. His area of expertise includes:

- Structural Design of Steam Turbine Building, CW Pump House.
- Structural Design of WWTP and WTP system.
- Field Engineering of Thermal Power Project.
- Dynamic Analysis of Block Foundations.
- Design of Pile Load Test Kentledges.
- Design of shuttering for Building slab concreting.

He worked as a Structural Engineer with M/s. Roark Consulting Engineer (RCE) leading Structural Consultancy working in Noida. During his tenure at organisation, he developed and utilized his design knowledge as per Indian Standards of Structural Design for RCC and Steel Design. After his role at RCE, He worked with Korean MNC at various level from Assistant Engineer to Manager for more than one decade. He was actively involved in to all kind of Structural Design including RCC and Steel Structure of Indian as well as overseas projects.

Mr. Soumitra Halдар obtained his B E (Civil Engineering) form the Jadavpur University, Kolkata and worked as Sub-Assistant Engineer (PWD), West Bengal.





**LINIVA CONSULTANTS**  
Civil & Geotechnical Professionals



**Mr. SOUMITRA HALDAR (Sr. Geotechnical Consultant)**

**E-mail: [info@linivaconsultants.com](mailto:info@linivaconsultants.com)**

**M 9818774413, 9818774413**

### **KEY QUALIFICATION**

His detailed description of works carried out is summarized as follow:

Designing and analysis of Steam Turbine Building, Boiler Foundation, CW Pump House.

Designing of Ash Pond and Raw Water Reservoir.

Designing of WWTP, Drainage system and Road (Rigid & Flexible Pavement).

As Structural Engineer, he was involved in designing of RCC and Steel Structure and its execution at project site.

Involved in Field Engineering at site, like changes in the design as per problem arises at site. Concrete Testing , Load testing, Geotechnical engineering field tests etc.

Supported Geotechnical Heads for regular geotechnical analysis like preparing technical reports, documentation , preparing drawings.

Supervision of the project during its execution of Ash Pond, Building & Major Equipment Foundation Casting and Modification etc.

Having good hands on engineering software's such as Staad Pro V8i, Midas, SAP 2000, AutoCAD, Tekla etc.

Geotechnical Report Preparation and witnessing of Bridge Load Test etc.



**LINIVA CONSULTANTS**  
Civil & Geotechnical Professionals

**THANK YOU**

**Regards,**

**LINIVA CONSULTANTS**

**(Civil and Geotechnical Professionals)**

**Regd. Office: B-4/192, Ground Floor, Safdarjung Enclave, New Delhi-110029**

**Corporate Office: B-5/47, LGF, Safdarjung Enclave, New Delhi-110029**

**Contact Detail: Mobile, WhatsApp No. & Email**

**9811647413, 9818774413**

**Email: anurgoyal@yahoo.com, linivaconsultants@gmail.com**